

Glass Transponder WB-08 and WB-09



A X E Z E

RFID Access Control Products



WB-08

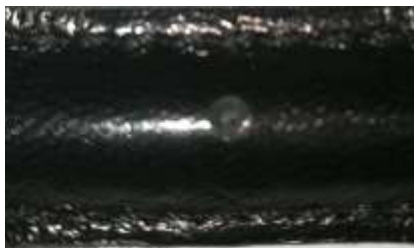
Overview

The WB-08 Glass Transponder wristband can be used with all Axeze LF readers, which currently include the KEP, KEN, CDK and KES ranges of Readers and Reader/Controllers. The wristband is made from quality black leather.

Specifications FOR BOTH

Functionality	Read Only
Memory (bits)	64
Memory Pages	1
Operating Frequency	134.2kHz
Modulation	FSK 134.2 kHz / 123.2 kHz
Transmission Principle	Half Duplex (HDX)
Power Source	Powered from the reader signal
Typical reading range	approx 7cm
Operating Temperature	-25° to +70°C
Storage Temperature	-40° to +85°C
Case Material	Glass
Protection Class	Hermetically sealed
EMC	Programmed code not affected by normal electromagnetic Interference or X-rays
Dimensions	$\phi 3.85 \text{ mm} \pm 0.05 \text{ mm} \times 23.1 \text{ mm} \pm 0.5 \text{ mm}$
Weight	0.6g

WB-09



Overview

The WB-09 Glass Transponder wristband can be used with all Axeze LF readers, which currently include the KEP, KEN, CDK and KES ranges of Readers and Reader/Controllers. The wristband is made from quality black leather. All the specifications are identical to the WB-08 except the layout of the Glass Tag insert.



Axeze Pty. Ltd. ABN 83 077 328 851
HQ: 85-91 South Road, Thebarton, South Australia 5031
Ph: 1300 766 768 sales@axeze.com.au www.axeze.com.au
The above specifications are subject to change without notice